

MAP OF SHAWNEE COUNTY KANSAS

Copyright, 1911, The Kansas Prairie Co., Topeka, Kan.

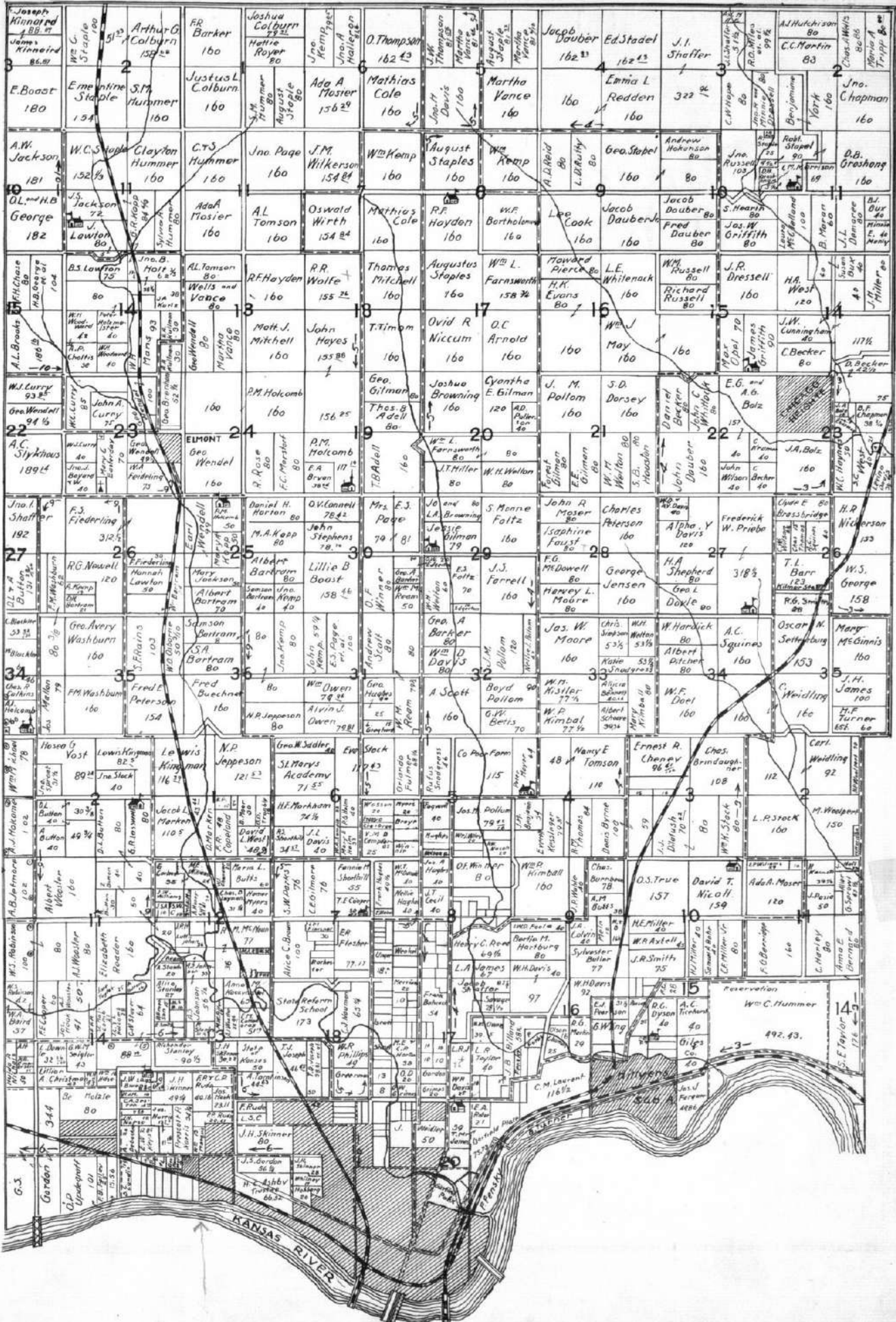
S. 217.1

T. 13. S.

SOLDIER TOWNSHIP

Parts of Twp. 10 and 11 South, Ranges 15 and 16, East of 6th P. M.
R XV. E || R XVI. E

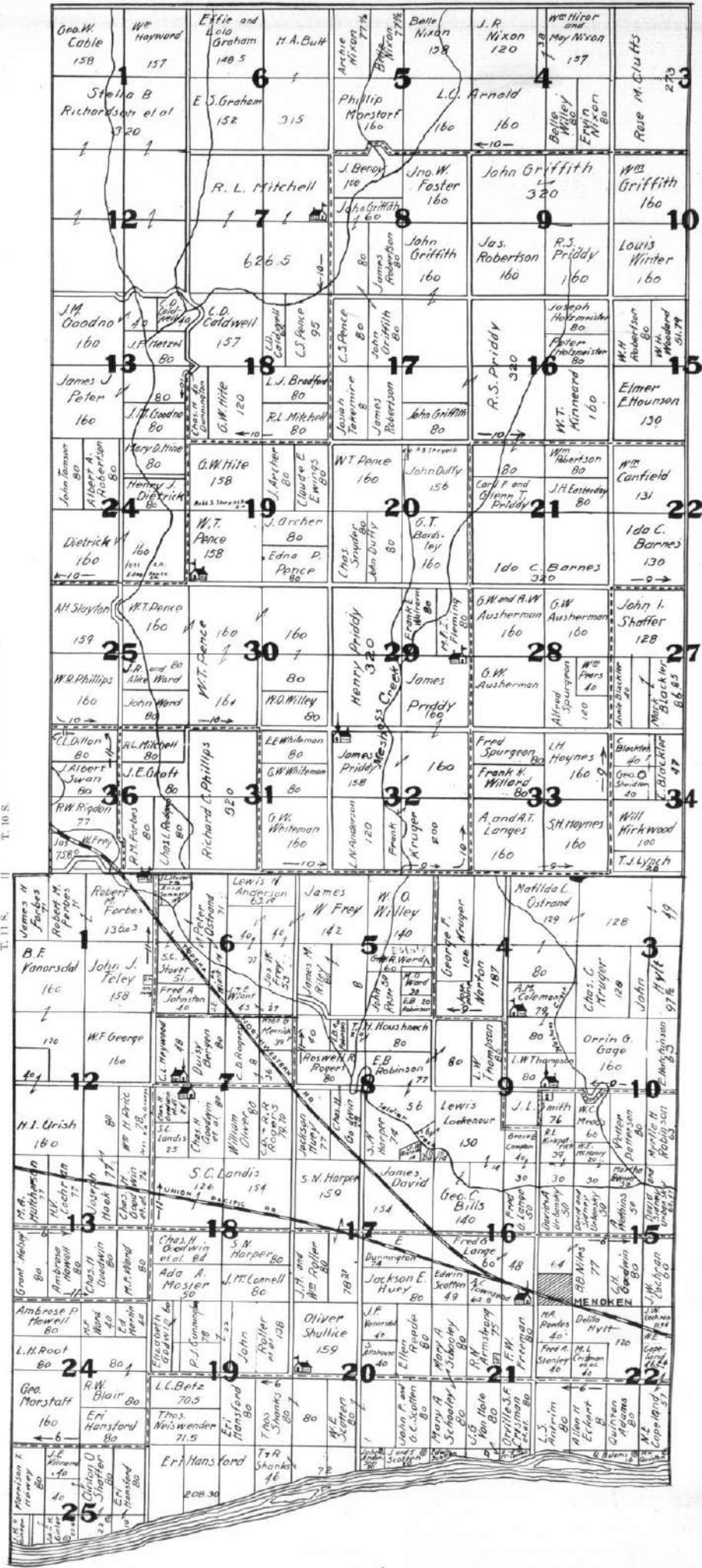
Scale, 1/4 inch to the mile.
Copyright, 1915, The Kansas Farmer Co., Topeka, Kan.



MENOKEN TOWNSHIP

Parts of Twp. 10 and 11 South, Range 14 and 15 East of 6th P. M.
Copyright, 1932, The Kansas Farmer Co., Topeka, Kan.

Scale, 1/4 inch to the mile.

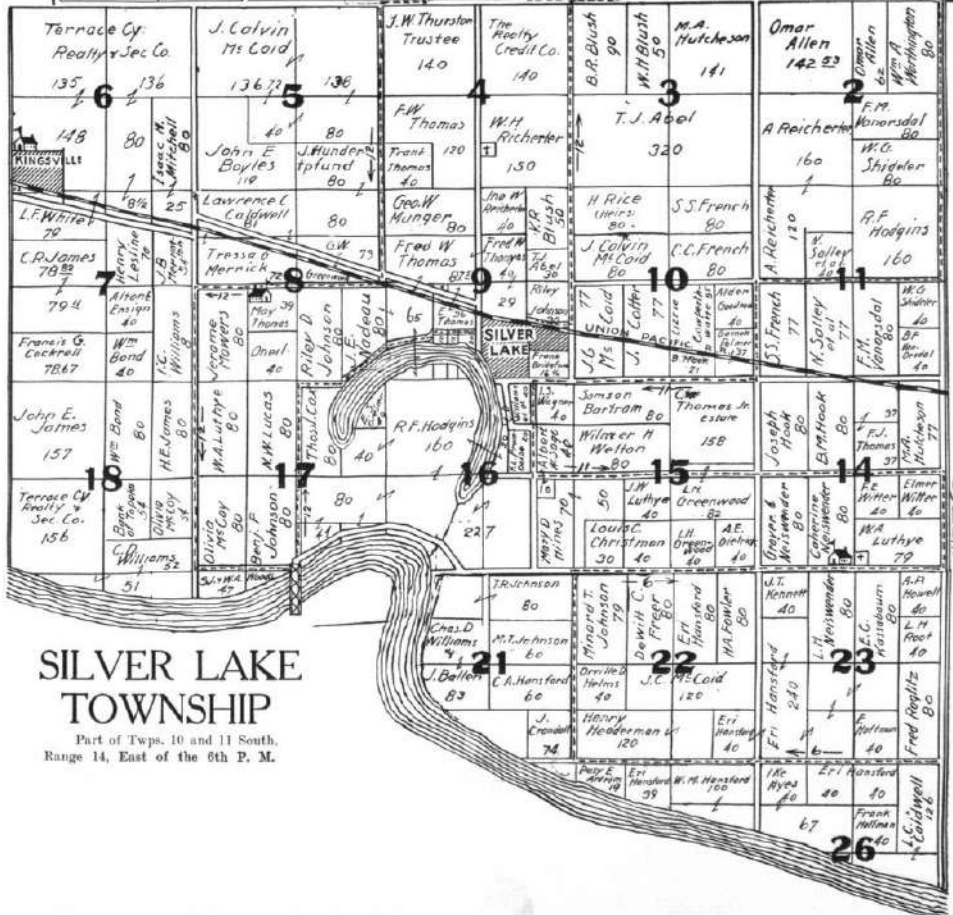
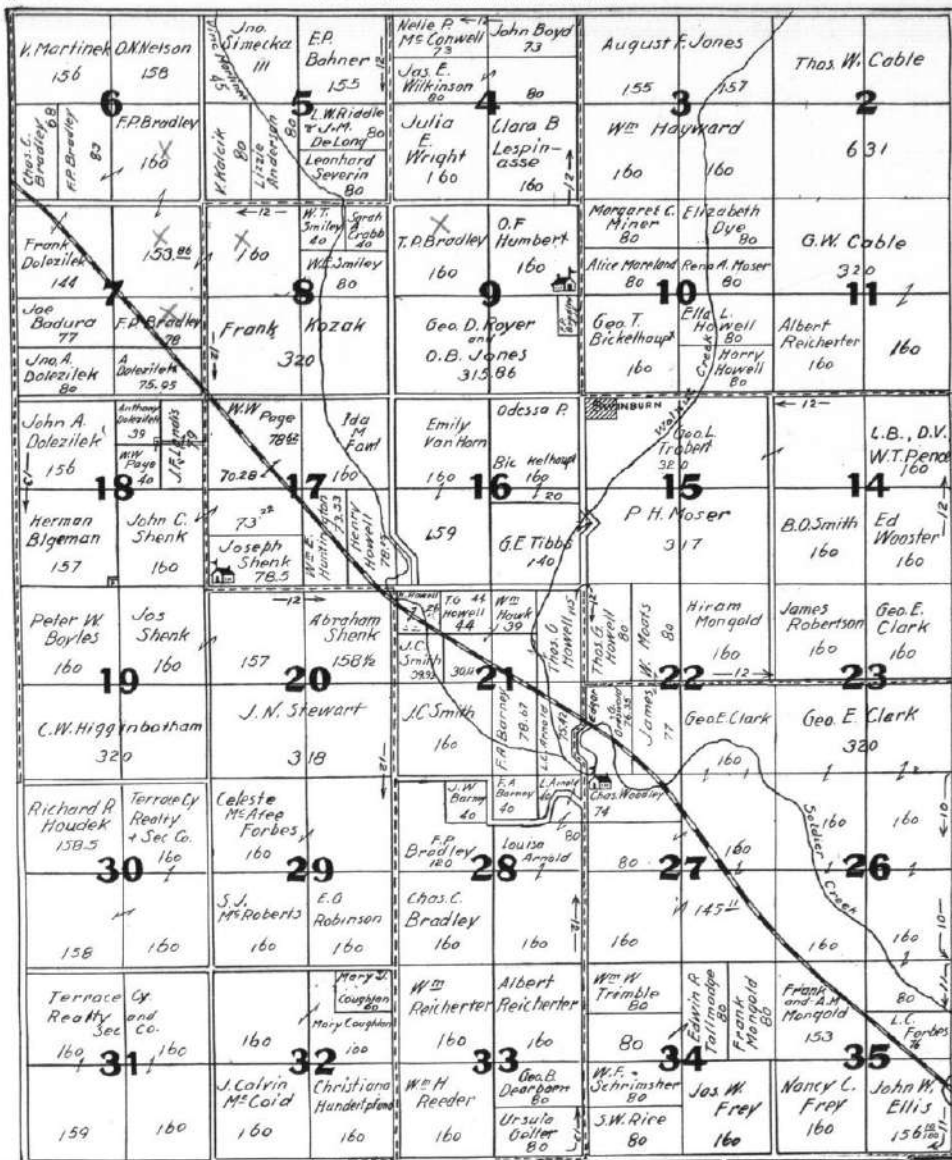


T. 11 S.

T. 10 S.

R. 14 E.

R. 15 E.



SILVER LAKE TOWNSHIP
 Part of Twps. 10 and 11 South,
 Range 14, East of the 6th P. M.

T. 10 S.
 T. 11 S.

ROSSVILLE TOWNSHIP

Parts of Twp. 10 and 11 South, Ranges 12 and 13, East of 6th P. M.

Scale, 1/4 inch to the mile.

R XII E || R XIII E

Copyright, 1915, The Kansas Farmer Co., Topeka, Kan.



T. 11 S. T. 10 S.

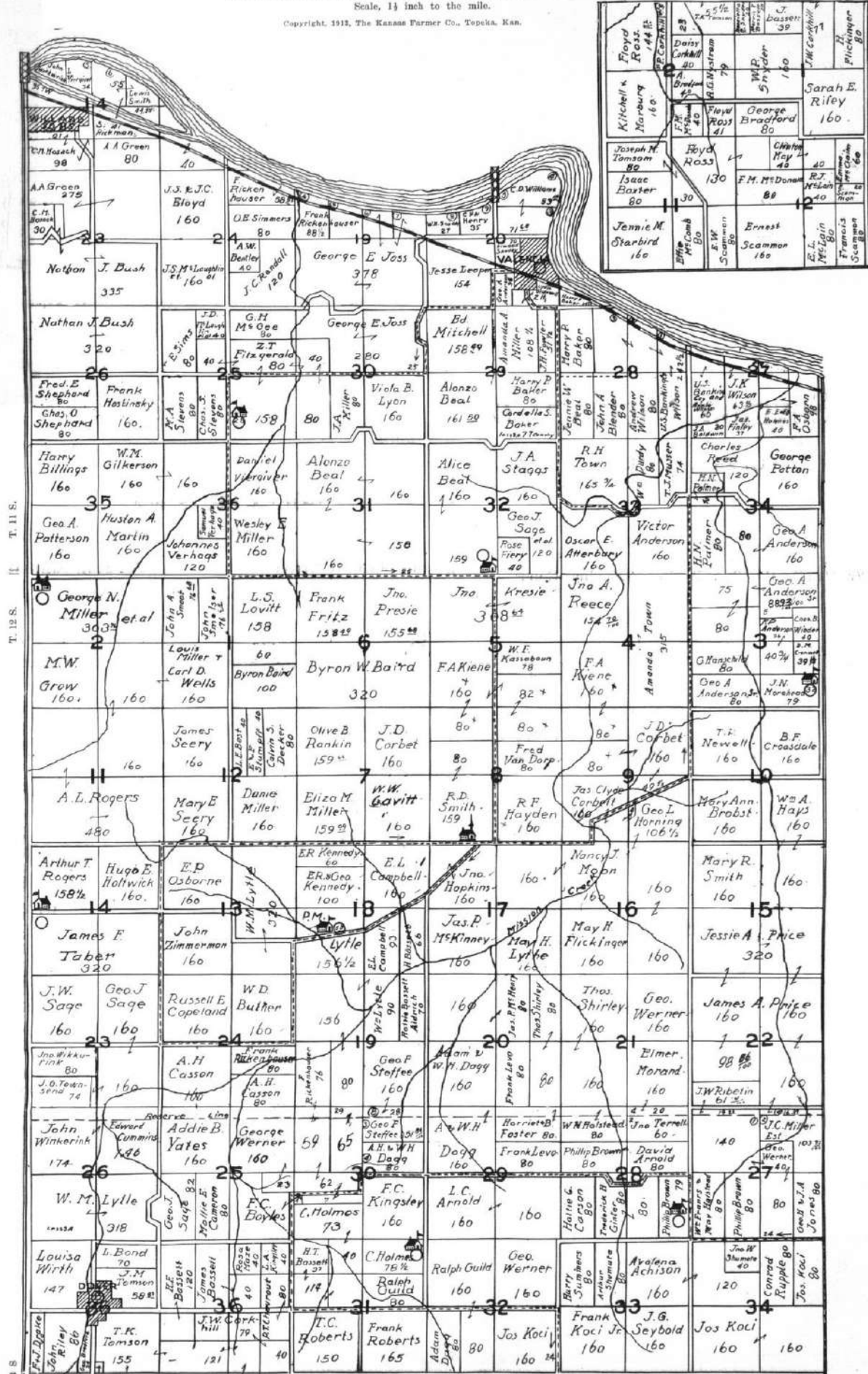
DOVER TOWNSHIP

Parts of Twp. 11, 12 and 13 South, Ranges 13 and 14, East of the 6th P. M.

Scale, 1/4 inch to the mile.

Copyright, 1912, The Kansas Farmer Co., Topeka, Kan.

Joins SW cor. of Twp. as indicated.

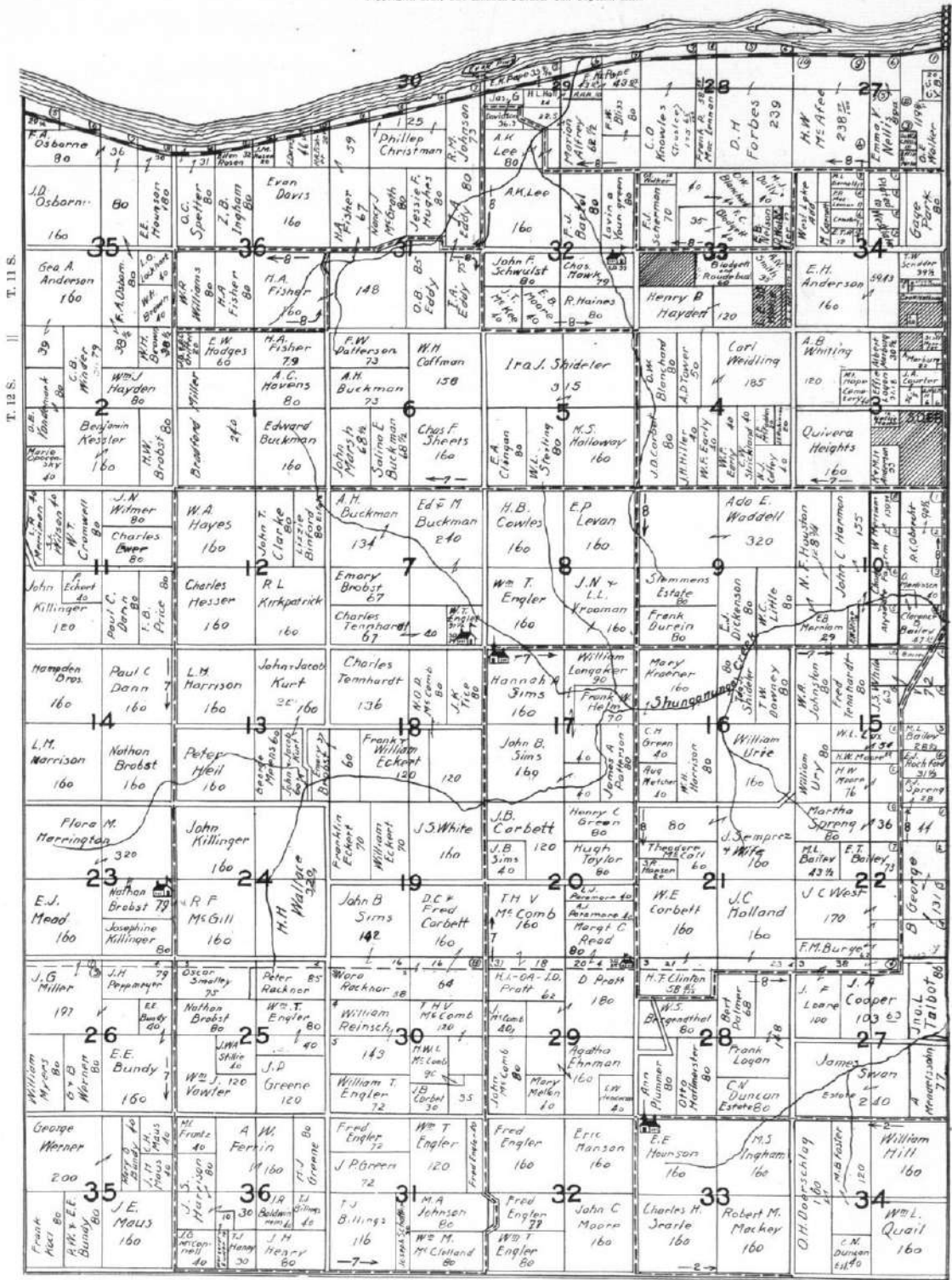


T. 11 S.
T. 12 S.
T. 13 S.

Sections 1, 2, 11 and 12 R. XIII E. || R. XIV E.
Join here

MISSION TOWNSHIP

Parts of Twps. 11 and 12 South, Ranges 14 and 15, East of 6th P.M.
Copyright, 1915, The Kansas Farmer Co. Topeka, Kan.



T. 11 S. || T. 12 S.

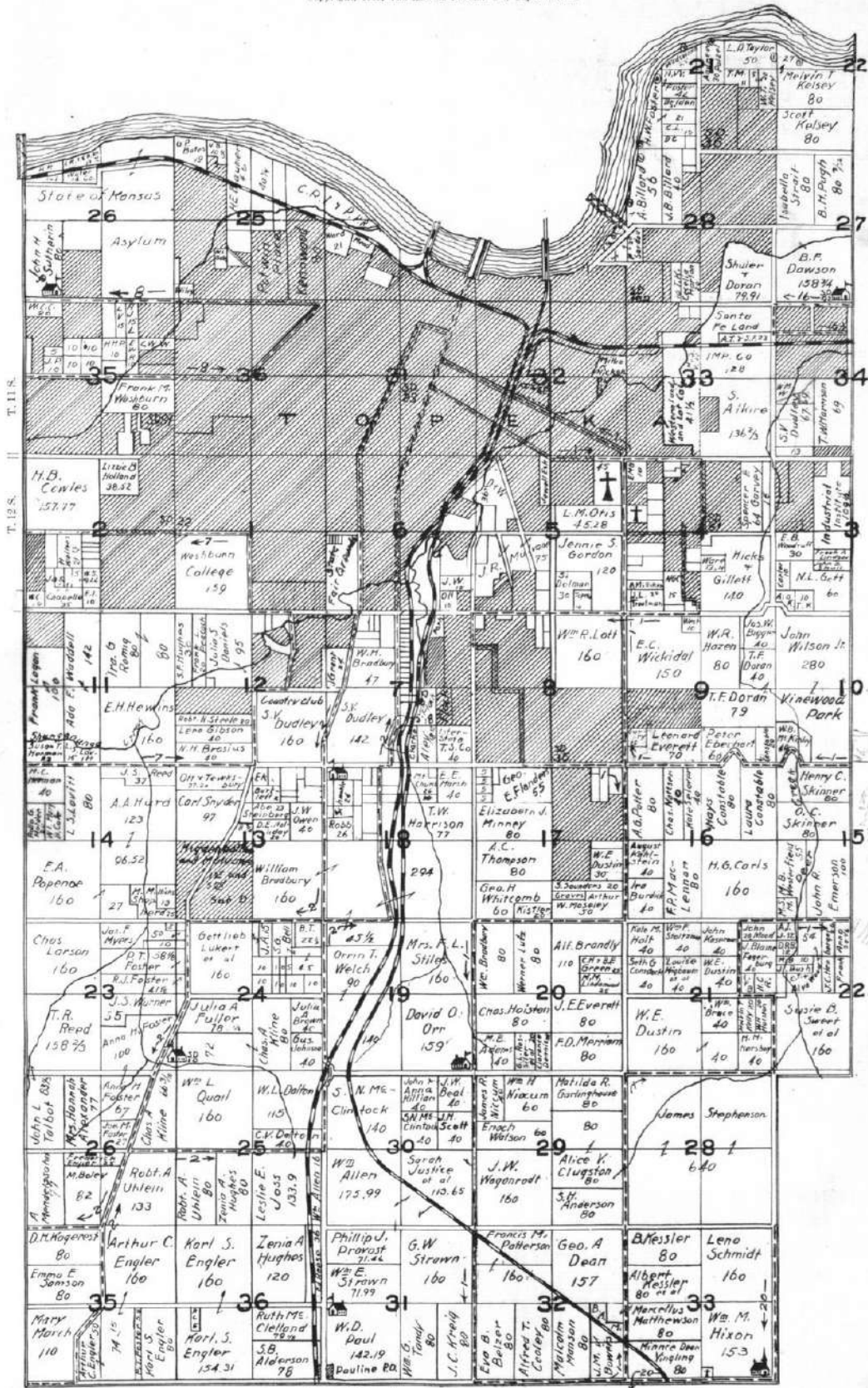
R XIV. E || R XV. E

TOPEKA TOWNSHIP

Parts of Twps. 11 and 12 South, Ranges 15 and 16, East of 6th P.M.

Scale, 1/4 inch to the mile.

Copyright, 1913, The Kansas Farmer Co., Topeka, Kan.



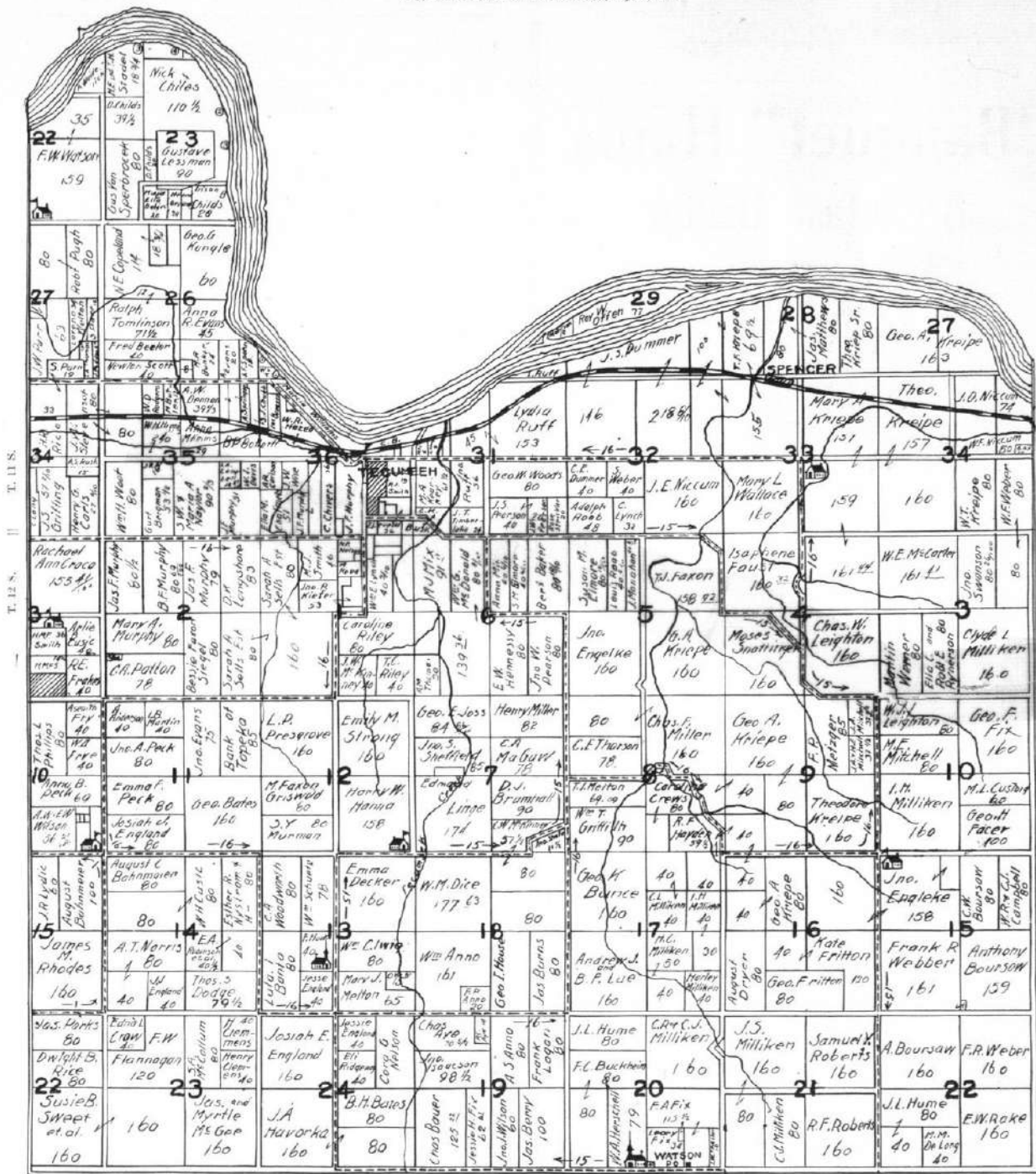
Committee Report
Source of Heights
Base of Heights
of Johnson Post 30
10-6
1911 Johnson's
Chas. J.
63, 64, 65, 66
Johnson
a. def. 12, 13, 14

R A V E || R A V E

TECUMSEH TOWNSHIP

Parts of Twp. 11 and 12 South, Ranges 16 and 17, East of 6th P.M.

Copyright, 1915, The Kansas Farmer Co., Topeka, Kan.



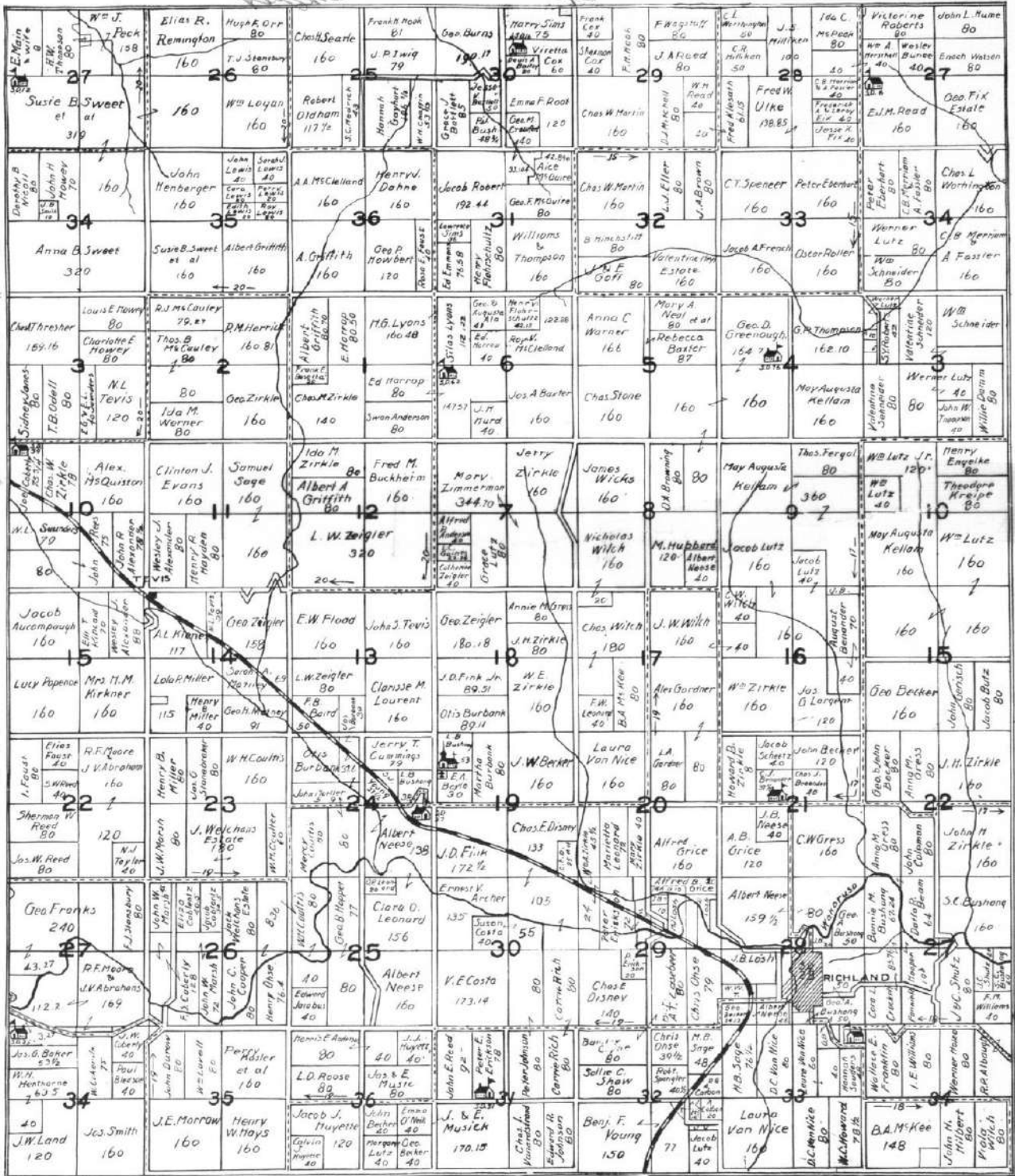
R XVI E || R XVII E

MONMOUTH TOWNSHIP

Parts of Twp. 12 and 13 South, Range 16 and 17, East of 9th P.M.

Copyright, 1915, The Kansas Farmer Co., Topeka, Kan.

R XVI E || R XVII E

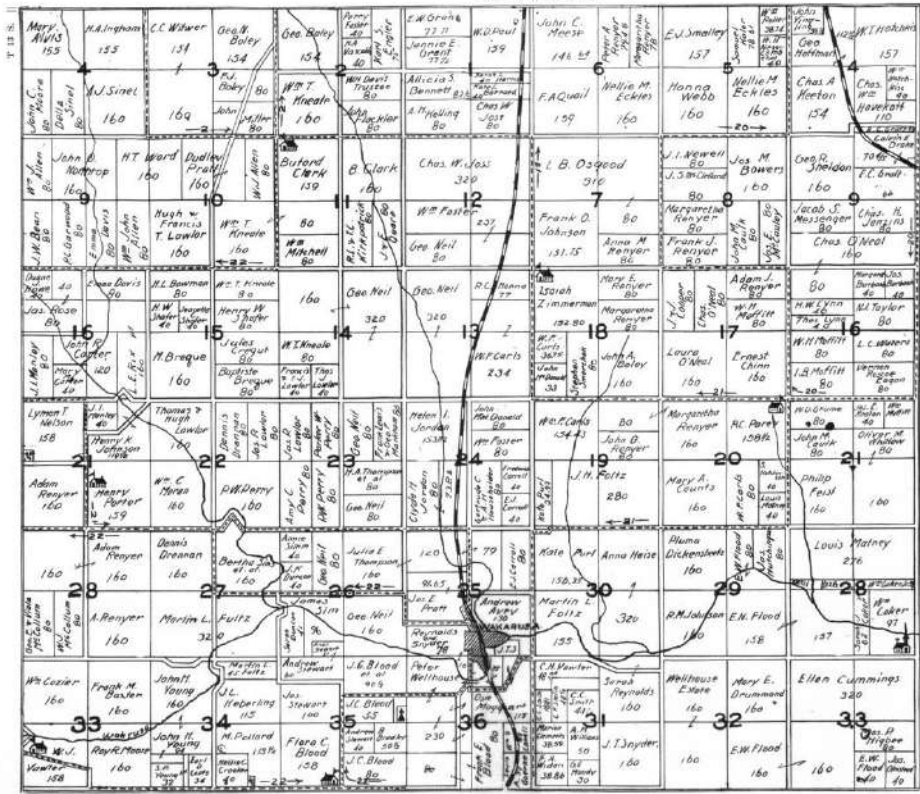


WILLIAMSPORT TOWNSHIP

Part of Twp. 13 South, Range 13 and 14, East of 9th P. M.

Copyright, 1913, The Kansas Farmer Co., Topeka, Kan.

R. XV. E. | R. XVI. E.



AUBURN TOWNSHIP

Township 13 South, Range 14 and parts of Ranges 13 and 15, East of the 8th P. M.

R 13 E

Copyright, 1911, The Kansas Farmer Co., Topeka, Kan.

R 14 E R 15 E

