

Over size  
R  
912,781  
243  
1894

Also  
Lm 490  
nr. 10

# STANDARD ATLAS

OF



# SHAWNEE COUNTY

# KANSAS

INCLUDING  
A PLAT BOOK

OF THE

VILLAGES, CITIES AND TOWNSHIPS OF THE COUNTY.

MAP OF THE STATE, UNITED STATES AND WORLD.

Patrons Directory, Reference Business Directory and Departments  
devoted to General Information.

ANALYSIS OF THE SYSTEM OF U.S. LAND SURVEYS, DIGEST OF THE  
SYSTEM OF CIVIL GOVERNMENT, ETC. ETC.

Compiled and Published

BY

## GEO. A. OGLE & Co.

PUBLISHERS & ENGRAVERS.

134 VAN BUREN ST.  
CHICAGO.

### 1898

Copyright 1898 by GEO. A. OGLE & Co

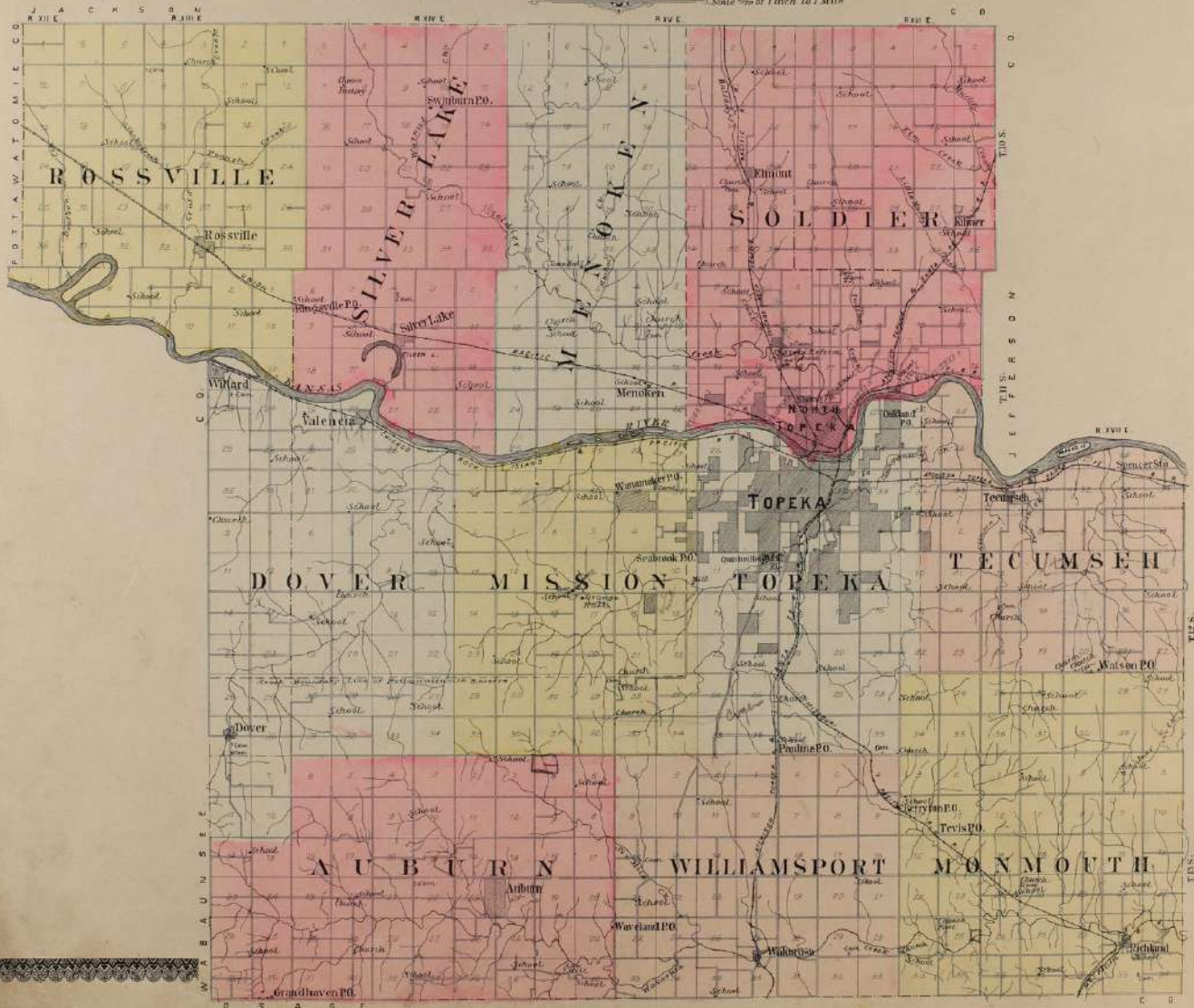
KANSAS STATE  
HISTORICAL

KANSAS STATE  
HISTORICAL SOCIETY



OUTLINE MAP OF  
**SHAWNEE COUNTY**  
KANSAS

Scale 1/4 inch to 1 Mile



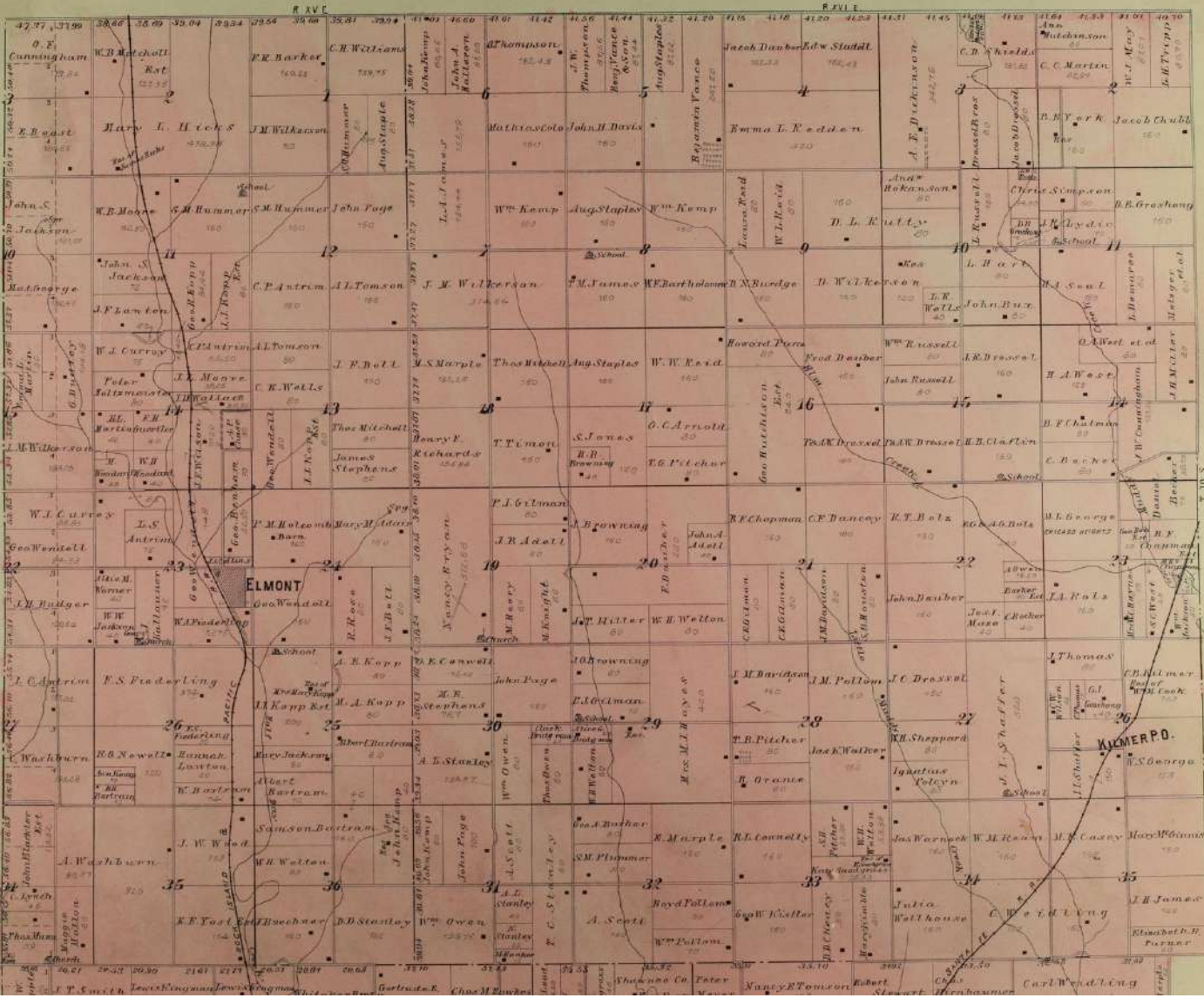
WATERMAN

7

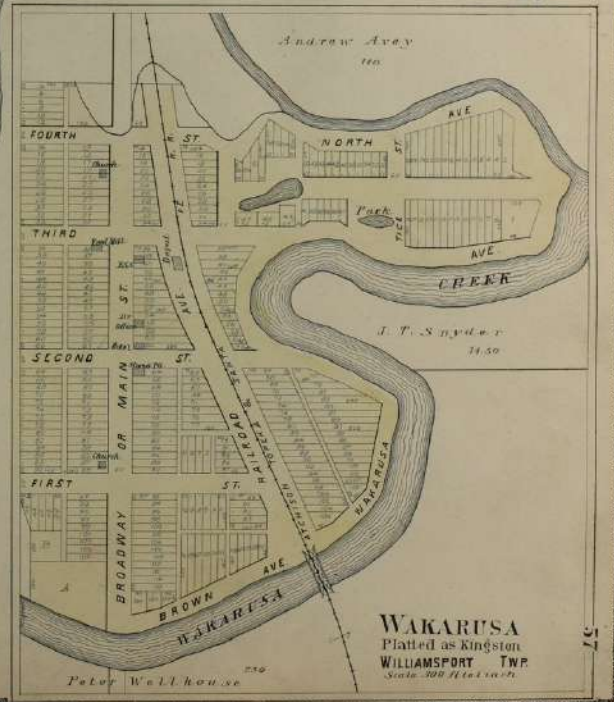
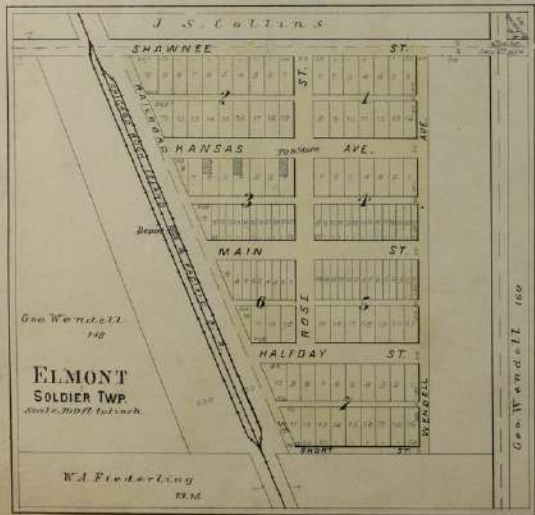
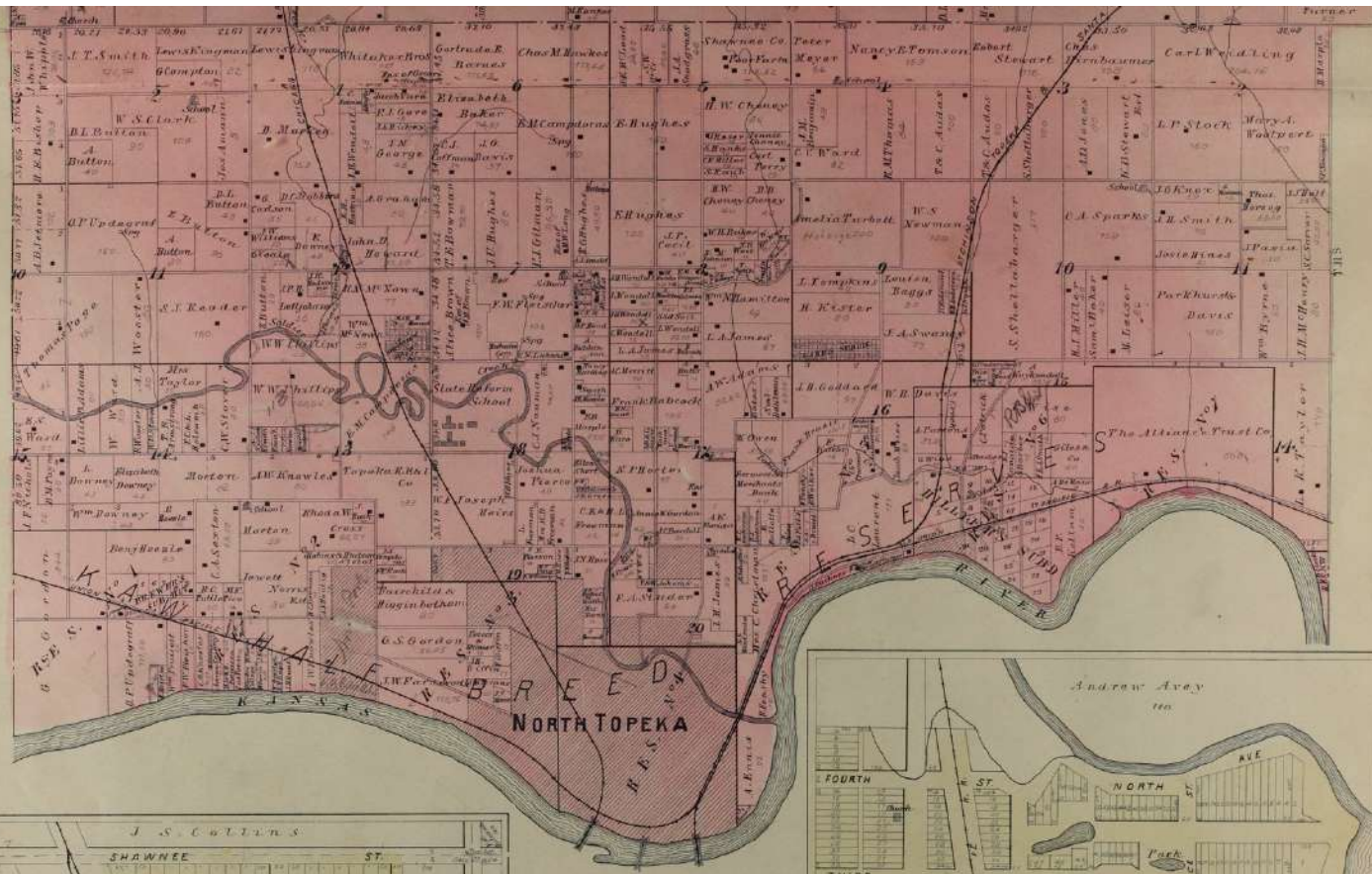



  
**SOLDIER**
  
 TOWNSHIP

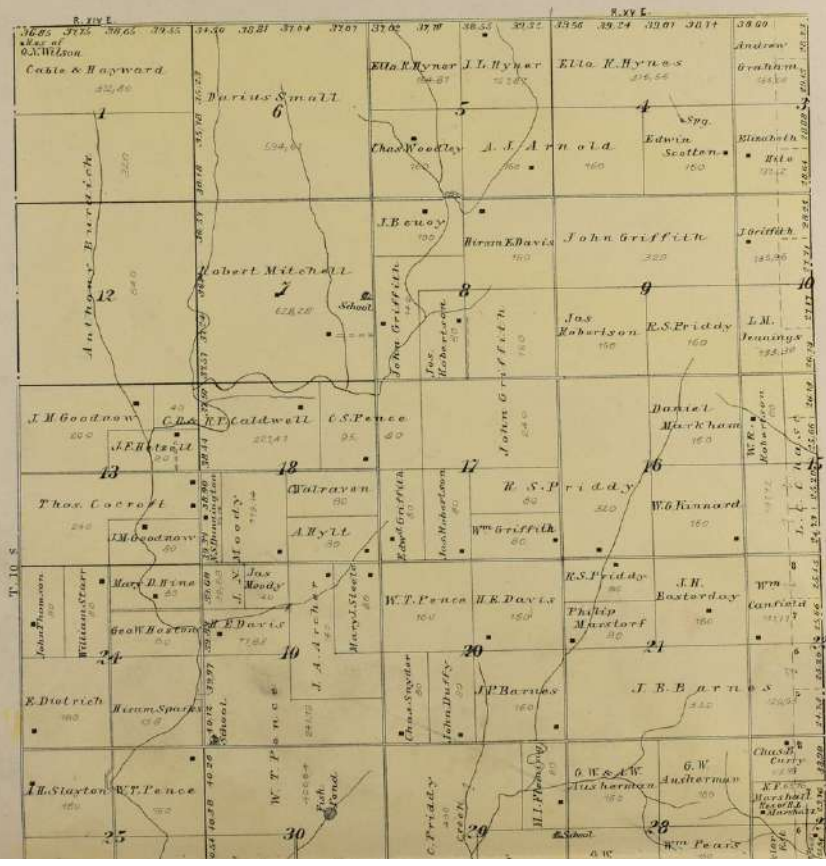
Part of Township 10 & 11 South Range 15 & 16 East of the 6th P.M.





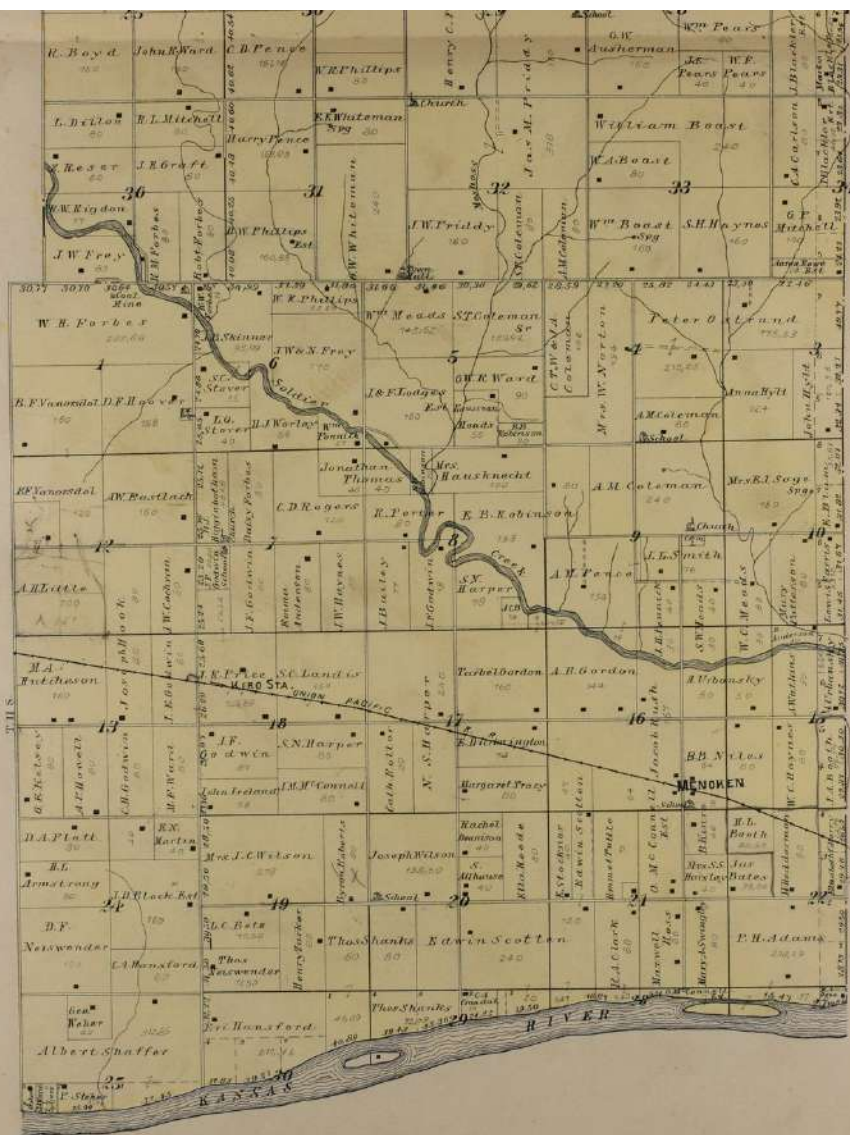


**MAP OF**  
**MENOKEN**  
**TOWNSHIP**  
 Scale 1 inch to 1 mile  
 Parts of Townships 10 and 11 South      Range 14 & 15 East of the 6th P.M.



170  
 160  
 250

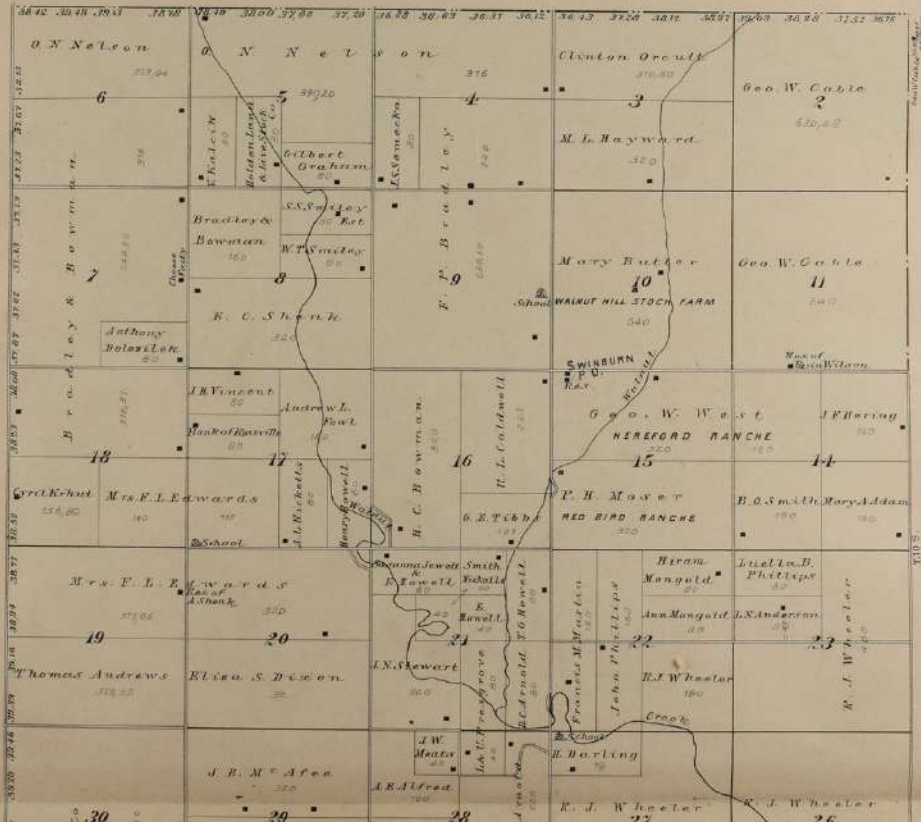





  
**MAP OF**  
**SILVER LAKE**  
**TOWNSHIP**  
Scale 1 inch = 1 mile

Parts of Townships 10 and 11 South

Range 14 East - 6th P.M.

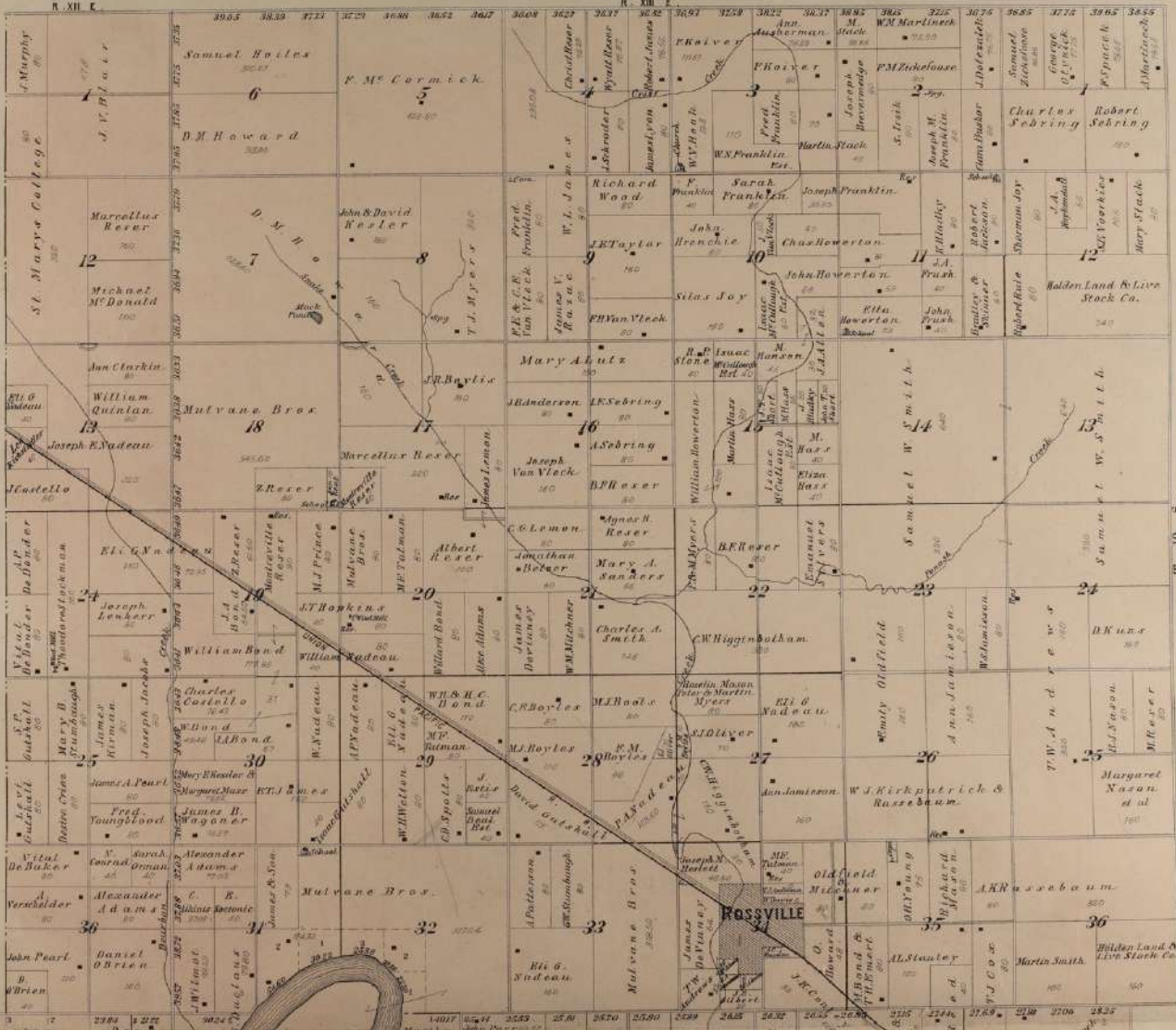


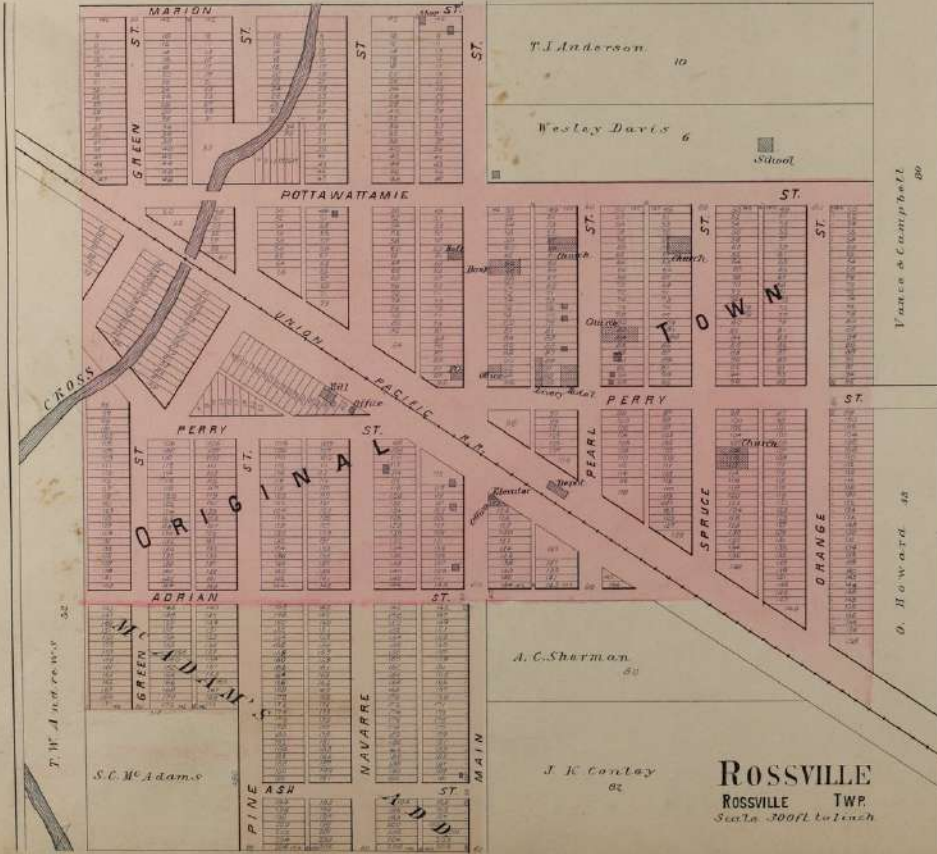







  
**MAP OF**  
**ROSSVILLE**  
**TOWNSHIP**  
 Parts of Townships 10 and 11 South      Ranges 12 & 13 East of the 6th P.M.

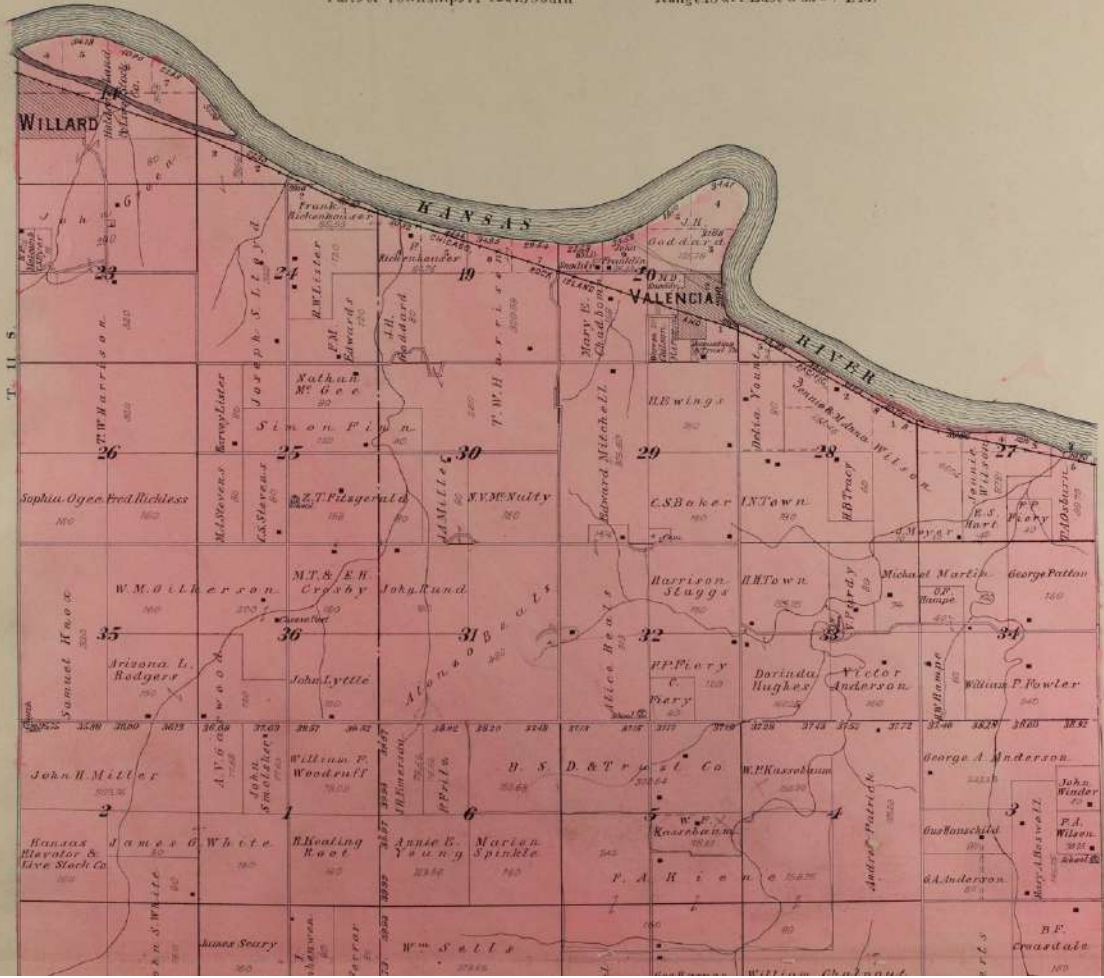







  
**MAP OF**  
**DOVER**  
**TOWNSHIP**  
Scale 1 inch to 1 mile

Parts of Townships 11-12 & 13 South      Range 13 & 14 East of the 6<sup>th</sup> P.M.









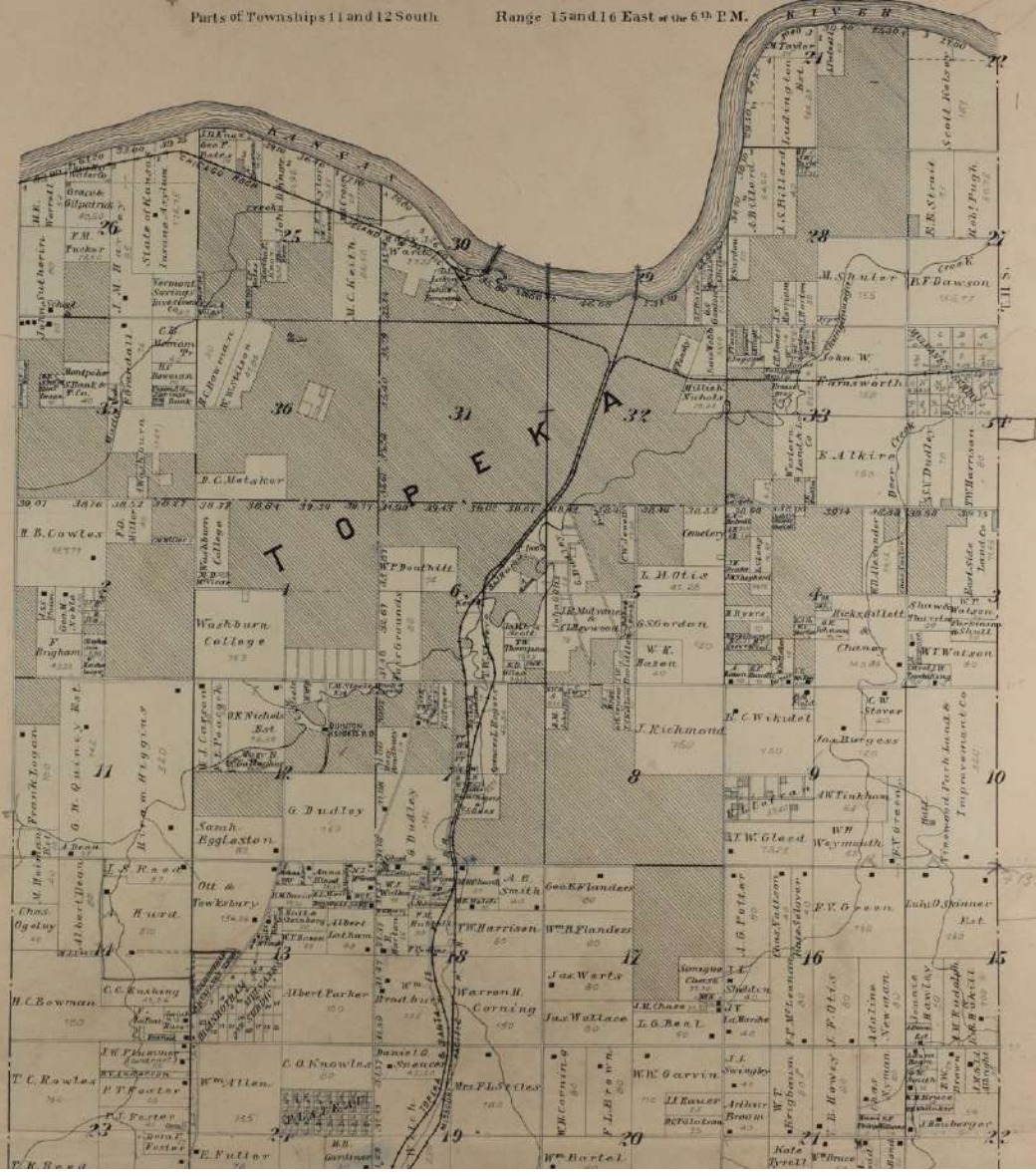




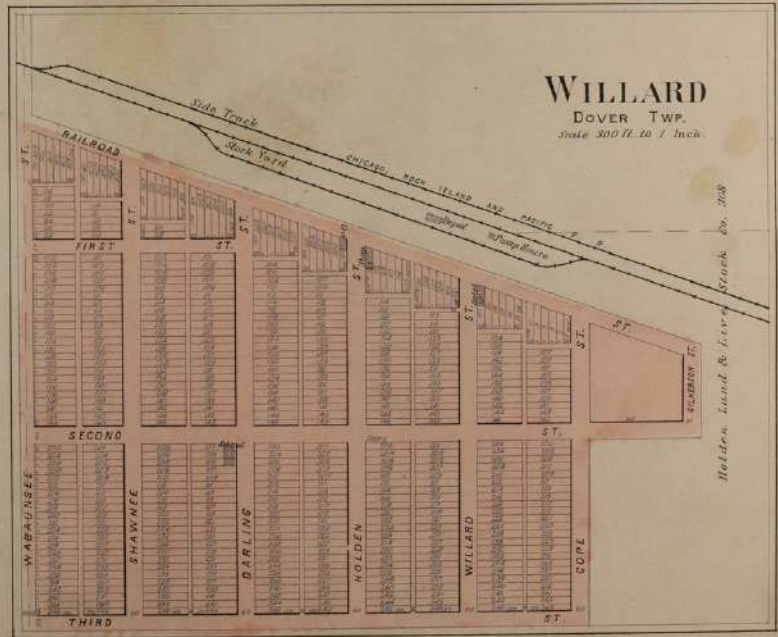
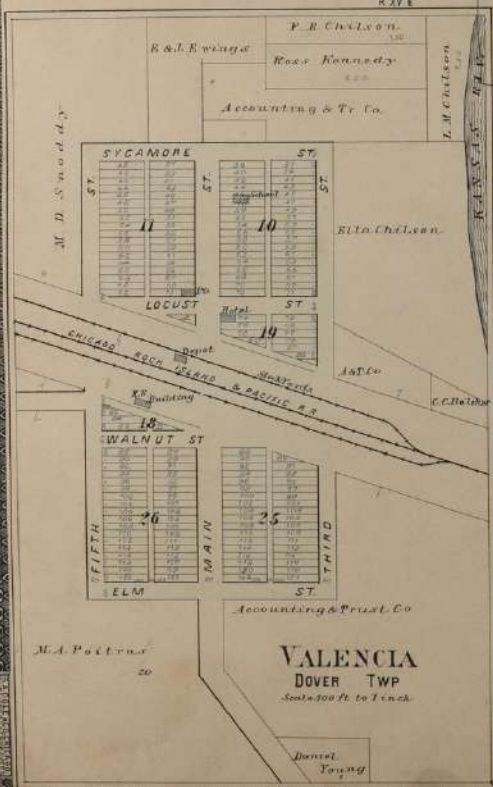
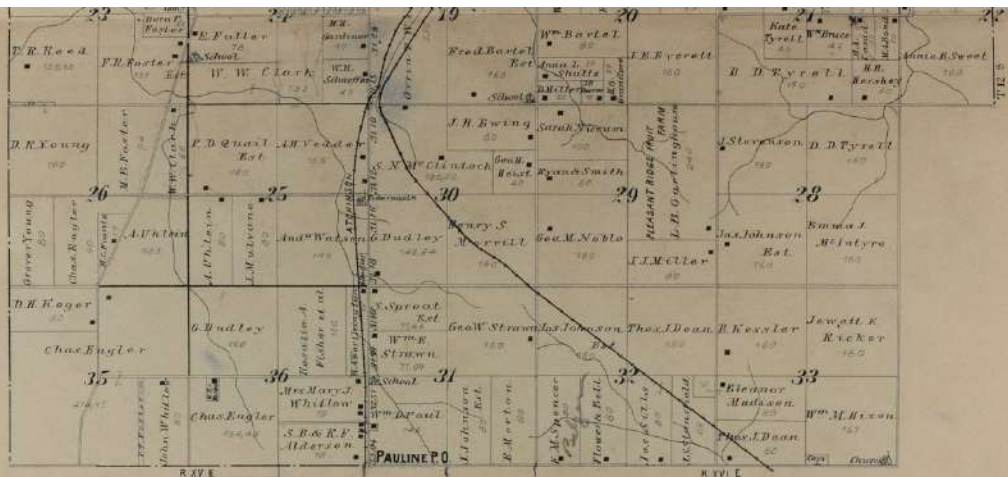



  
**MAP OF**  
**TOPEKA**  
 TOWNSHIP  
Under Lincoln's Will

Parts of Townships 11 and 12 South      Range 15 and 16 East of the 6<sup>th</sup> P.M.



















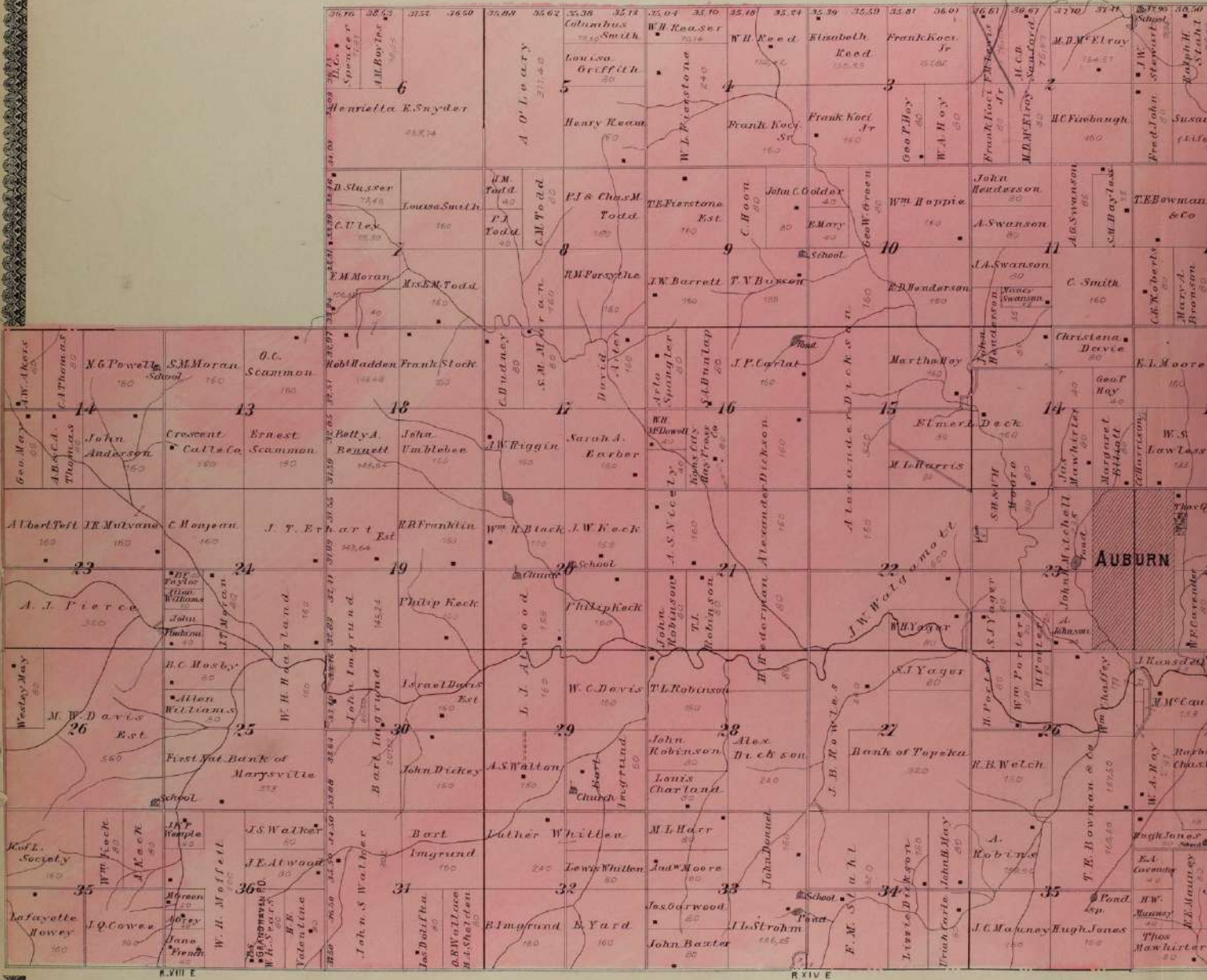




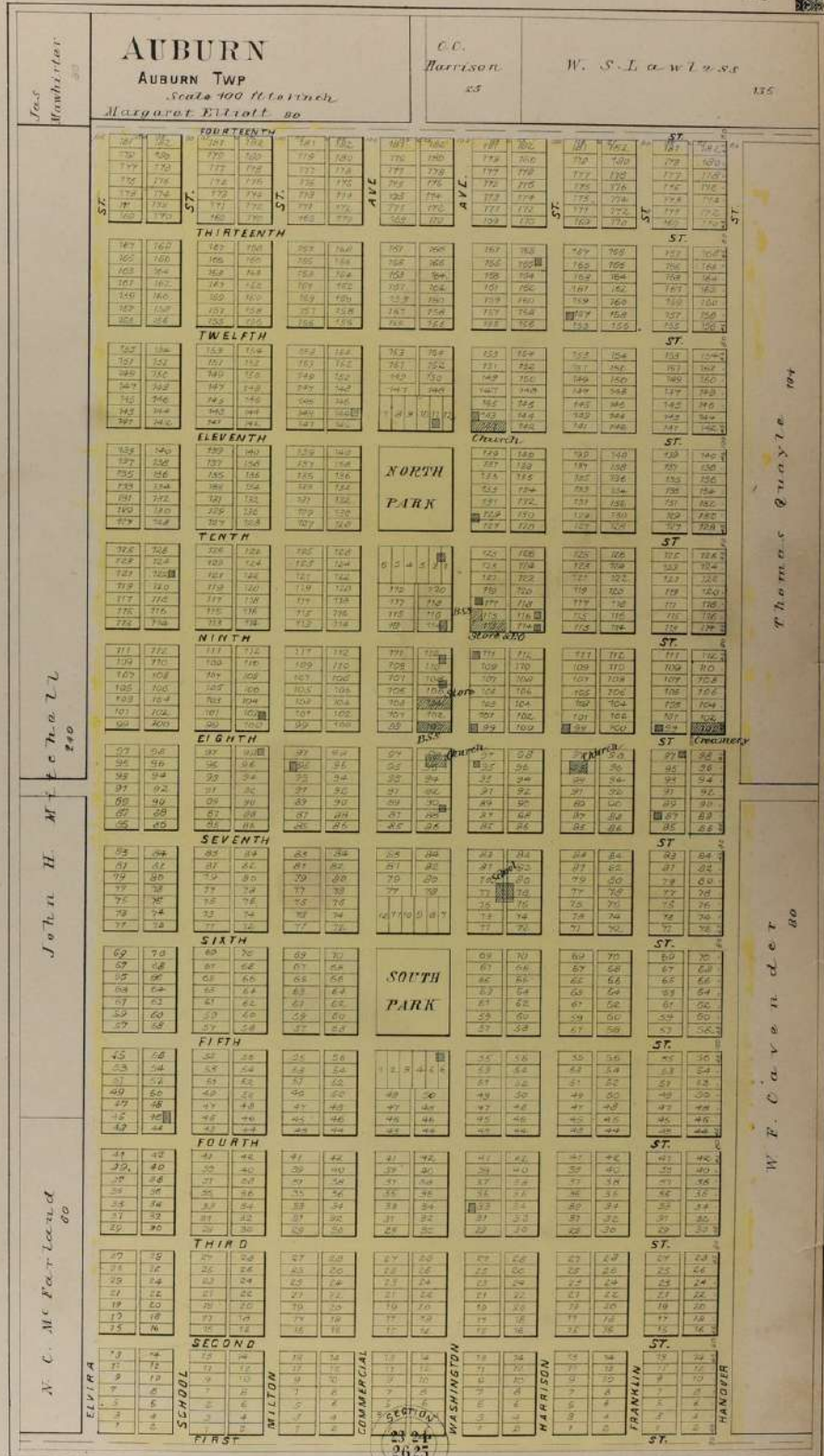

  
**AUBURN**
  
 TOWNSHIP

Township 13 South

Range 14 and Parts of Ranges 13 and 15 East of the 6th







at the 6<sup>th</sup> P.M.

